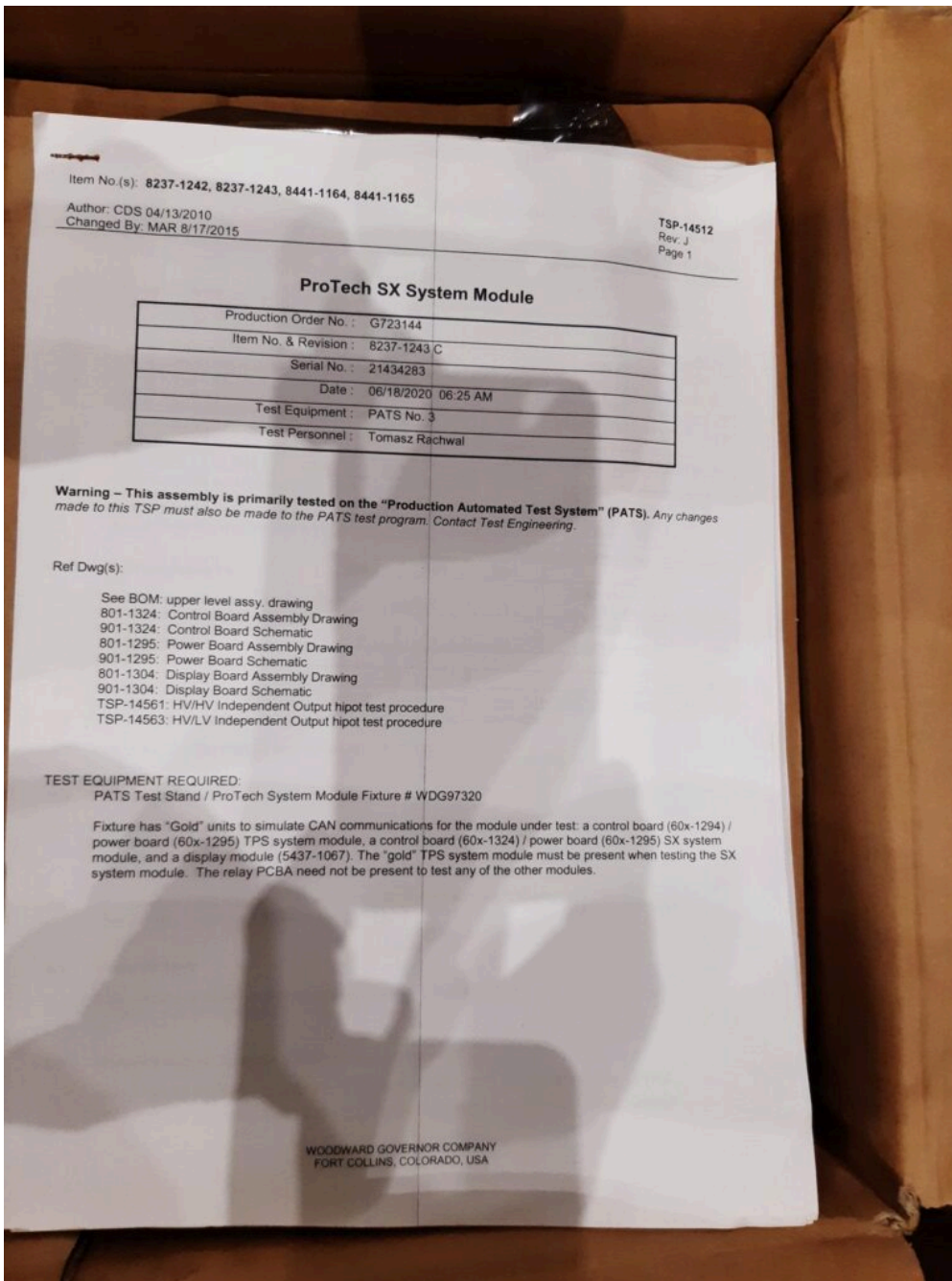




ProTech-SX Safety System with Integrated Overspeed Protection





Description: The Woodward ProTech-SX is a safety programmable logic controller (PLC) with integrated overspeed protection designed to safely shut down any plant process equipment, engine, or steam, gas, or hydro turbine upon sensing a safety event. This stand-alone safety system accepts two speed inputs and seven discrete/analog inputs, uses programmed logic to determine when a safety event has occurred, then issues system shutdown commands and alarms. The Woodward uses five fast-acting, configurable relay outputs and a speed meter output to interface with/command the specific system or device being protected.

External ID: 2966134

Category: Electrical Equipment

Subcategory: PLC Equipment

Manufacturer: Woodward

Model: ProTech-SX

Serial No: 21434283

Part No: 8237-1243 C

Year: 2020

Weight [kg]: 2

Dimension (L x B x H) [m]: 0,34x0,28x0,16

Condition: New

Tag No: —



URL:

<https://www.modernamericanrecyclingservices.com/equipment/protech-sx-safety-system-with-integrated-overspeed-protection-2966134/>

Frederikshavn, Denmark

European Large Scale Recycling

Sandholm 55H

9900 Frederikshavn

+45 53365179

kim@mars-eu.dk